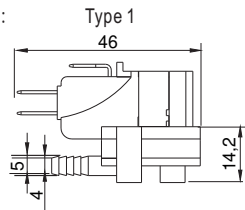
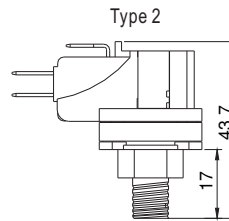


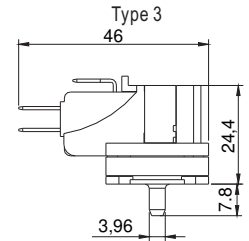
Connection:



4.0 mm Tube Side Entry



1/8" NPT Bottom Entry



4.0mm Tube Bottom Entry

**ELECTRICAL:**

12/24 VDC - 125/250 VAC  
3A, 5A, 16A, 21A

**ADJUSTABLE PRESSURE RANGES:**

	In. H <sub>2</sub> O	mbar	psi
1) 5A	3 to 20	7 to 50	0.1 to 0.73
2) 5A/16A	20 to 40	50 to 100	0.73 to 1.45
3) 5A/16A	32 to 80	80 to 200	1.16 to 2.9
4) 5A/16A	60 to 201	150 to 500	2.19 to 7.25
5) 5A/16A	201 to 401	500 to 1000	7.25 to 14.5
6) 5A/16A	401 to 803	1000 to 2000	14.5 to 29
7) 5A/16A	803 to 1606	2000 to 4000	29 to 58

**SWITCH TYPE:**

Snap Action

**OPERATING PRESSURE RANGE:**

Pressure Range 1.5 In. H<sub>2</sub>O - 60 PSI  
(0.054 - 60 psi)  
(3.74 - 4136 mBar)

**PROOF PRESSURE:**

100 PSI (6.9 Bar)

**TEMPERATURE RANGE:**

-40° to +185°F (-40° to +85°C)  
Ambient and Medium

**WEIGHT:**

0.036 lbs.  
(0.02 kg)

**APPLICATION MEDIUM:**

Air, Water, and Inert Gases

**MECHANICAL LIFE:**

1,000,000 Cycles

**CONNECTION:**

1/8" NPT - standard  
(optional 4.0mm OD tube Side or Bottom Entry)

**WETTED MATERIAL:**

Diaphragm: EPDM (standard)  
(optional Silicone Rubber, TEFLON® and Polyurethane)

Housing: Glass-filled Nylon

**ORDERING INFORMATION**

*Special Order Only - Minimum Quantity Required - Consult Factory*

MPA	- 5	- *R	- 2	- C	- *2
Model	Set Point	Direction	Connection	Circuit	Rating
MPA Field Adjustable	See Adjustable Model Ranges Above	R - PSI Rising F - PSI Falling MBR - Bar Rising MBF - Bar Falling	1 - 4.0mm OD Tube Side Entry	C - SPDT	1 - 3A 2 - 5A 3 - 16A 4 - 21A
MPF Factory Set	Specify Set Point  Pressure: 1.5 In. H <sub>2</sub> O - 60 PSI	<i>*Omit For Model MPA</i>	2 - 1/8" NPT (standard) Bottom Entry  3 - 4.0mm OD Tube Bottom Entry		